

VOLUME - LOCAL ON/OFF

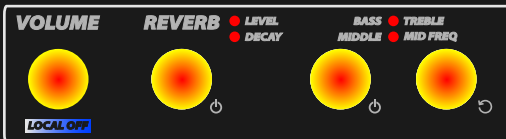
Turn for Volume (green-red) - Slow push: local on/off
When local off is activated, knob is blue.

REVERB - ON/OFF

1. Reverb level.
2. Reverb decay.

EQUALIZATION

Slow push to turn on/off,
push left to switch bands.
(Bass/Treble or Mid/Mid. Freq.)



LOGO GETS BRIGHTER
WHEN A PHYSICAL MODELING
ENGINE IS IN USE.

PRESETS

To recall a preset, first select Bank and then push the desired preset number.

To save a preset, hold the desired preset button until you see a LED animation.

SEVEN WILL ALWAYS START WITH PRESET 1-1 WHEN POWERED ON.

BANK SELECT

Press to select between
4 banks of 8 presets each.
Bank 1 is read-only.

TRANPOSE ON/OFF

Press and hold this button
together with notes on the Seven
keyboard to select the amount of
Trasposition. Hold for 3 seconds
to reset.



CLAVI TABS

When Clavi engine is active,
hold this button along
with buttons 1-6 for
filters and pickup switches.

EFFECTS RATE & DEPTH

Quick push to switch between
Rate or Depth of each effect.
Green-red: depth.
Pulsing blue: rate.

EFFECT SELECTION

Press the «select» button
in order to choose among
one of the four available
effects of Fx1 or/and Fx2.

AMP/DRIVE
ON/OFF &
AMOUNT

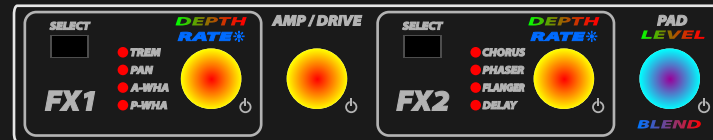
PAD
On/off, blend
& Level.

RGB Encoders

1. Turn effect ON or OFF.
2. Switch between two different parameters.
3. Set the parameter values.

Values are shown in the form of colors fading
between green/red or blue/red

Quick Push : switches between parameters
Slow Push: Turns ON or OFF



Getting Started

1. Connect AC cord.
2. Connect audio outs to your mixer/amp.
3. Power the Seven on.
4. Start playing preset 1-1, the most iconic E.P. sound.

BALANCED OUTPUTS

Audio left and right TRS balanced outputs. Connect your amplification system here; please set «OUT LEVEL» accordingly.

SYSTEM USB PORTS

USB-host ports - use them to connect USB class compliant MIDI controllers, USB flash drives, WIFI module. Max current draw: 300mA.

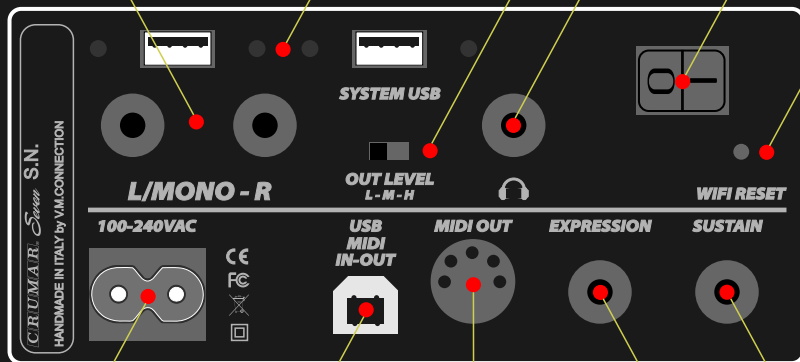
OUT LEVEL SELECTION

«L» - consumer level 10dB.
«M» - professional level +4dB.
«H» - ONLY FOR OLD AMP SYSTEM.
Improper use of this setting can reduce S/N ratio.

HEADPHONES OUT CONNECTOR

POWER ON/OFF BUTTON
Fun starts here.

WIFI PASSWORD RESET
Just press the button inside the hole in case password is lost.



AC MAIN PLUG INLET
From 100 to 240 VAC.
Suitable for every Country.

MIDI IN/OUT USB

Device type B USB port used to connect Crumar Seven to your computer for MIDI input and output connectivity.

MIDI OUT
Standard MIDI
cables plug.

SUSTAIN PEDAL INPUT
Used for sustaining notes. Change polarity by holding the BANK button for 3 seconds.

EXPRESSION PEDAL INPUT
TRS Jack input - signal on ring from 10k to 20k linear pot.